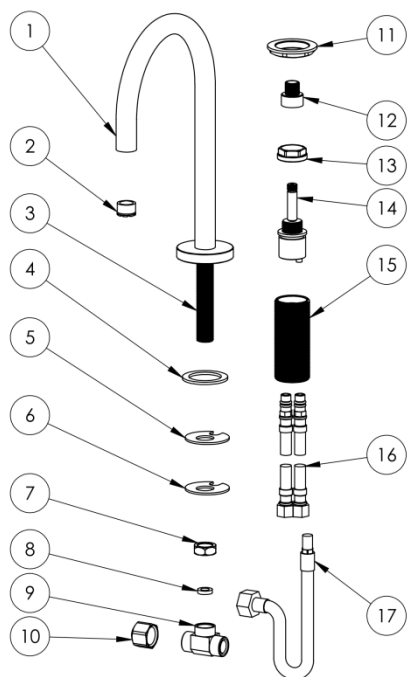
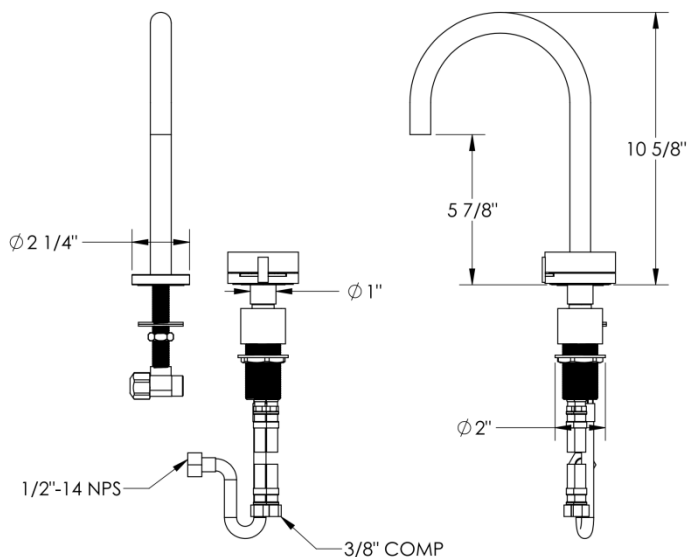


### FEATURES

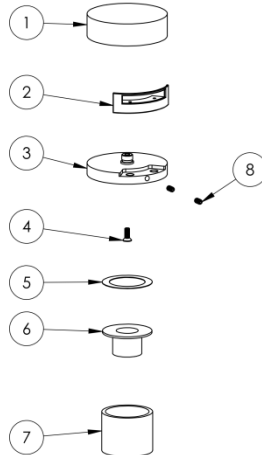
- ½ turn washerless ceramic disc valve cartridge
- Flexible hose connection for 4" to 8" spread installations
- Flow rate 1.2 gpm (4.5 lpm) maximum flow rate
- Solid brass construction
- Listed by CSA, NSF, and other municipalities
- Warranty:
  - Limited lifetime warranty (residential use)
  - One year (commercial use)
- Shipping weight (lbs.) 10
- Shipping dimensions (in.): 29x12x4



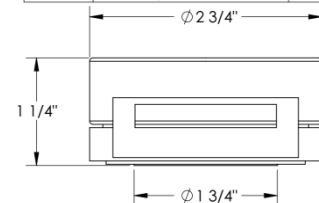
| ITEM NO. | PART NUMBER            | QTY. |
|----------|------------------------|------|
| 1        | 22-2-SPT               | 1    |
| 2        | Cache PCA TJ - 1.2 GPM | 1    |
| 3        | 142-NPPL               | 1    |
| 4        | 22-2-1.8IN GASKET      | 1    |
| 5        | 142-RBBR-HRS-SHOE-WSHR | 1    |
| 6        | 142-HRS-SHOE-WSHR      | 1    |
| 7        | 142-LOCK-NUT           | 1    |
| 8        | 142-TEE-GSKT           | 1    |
| 9        | 142-TEE                | 1    |
| 10       | HALF INCH CAP          | 1    |
| 11       | SS-DMV1.3-NUT          | 1    |
| 12       | SS-DMV1.3-PCKNG-NUT    | 1    |
| 13       | SS-DMV1.3-CRT-NUT      | 1    |
| 14       | SS-DMV1.3-CRT          | 1    |
| 15       | SS-DMV1.3-BODY         | 1    |
| 16       | SPPLY-HOSE-3-8COMP     | 2    |
| 17       | SPPLY-HOSE-0.5-14-NPS  | 1    |

### HANDLE TRIMS

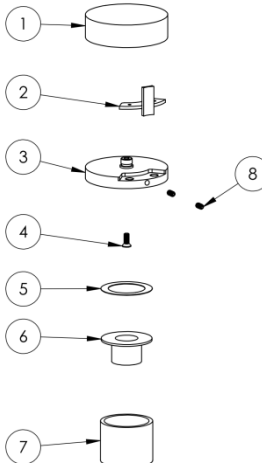
#### Elements Bridge (Code: E1♦)



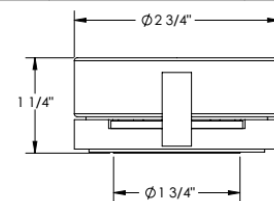
| ITEM NO. | PART NUMBER                           | QTY. |
|----------|---------------------------------------|------|
| 1        | ELMNT-HNDL-COVER                      | 1    |
| 2        | ELMNT-HNDL-INSRT (SCALLOP OR BRIDGE)  | 1    |
| 3        | ELMNT-HNDL-BASE                       | 1    |
| 4        | #8-32 FLAT HEAD; 7/16" LENGTH         | 1    |
| 5        | PLSTC-WSHR                            | 1    |
| 6        | ZEN-MGNT-DMV1.3-LOCK-NUT              | 1    |
| 7        | PLSTC-CLLR                            | 1    |
| 8        | #8-32 SOCKET; CUP POINT; 5/16" LENGTH | 2    |



#### Elements Scallop (Code: E2♦)



| ITEM NO. | PART NUMBER                           | QTY. |
|----------|---------------------------------------|------|
| 1        | ELMNT-HNDL-COVER                      | 1    |
| 2        | ELMNT-HNDL-INSRT (SCALLOP OR BRIDGE)  | 1    |
| 3        | ELMNT-HNDL-BASE                       | 1    |
| 4        | #8-32 FLAT HEAD; 7/16" LENGTH         | 1    |
| 5        | PLSTC-WSHR                            | 1    |
| 6        | ZEN-MGNT-DMV1.3-LOCK-NUT              | 1    |
| 7        | PLSTC-CLLR                            | 1    |
| 8        | #8-32 SOCKET; CUP POINT; 5/16" LENGTH | 2    |



Note: ♦ denotes the cover finish

### IMPORTANT INSTALLATION INFORMATION

- USE TEFLON TAPE OR PIPE SEALANT FOR THREADED CONNECTIONS
- DO NOT USE PLUMBER'S PUTTY ON ANY OF THE BRASS COMPONENTS  
This will cause the finish to tarnish and void the warranty. A non-corrosive Alkoxy Silicone is recommended.
- DURING SWEATING OF LINES DO NOT OVERHEAT CASTING  
Overheating may cause damage to internal mechanism
- COPPER ADAPTORS MAY BE REQUIRED TO COMPLETE YOUR INSTALLATION

**For technical support, please call 718-257-2800**

Rev. 1/1